

DAVID SIMS & ASSOCIATES, P.C.
Consulting Engineers
Arboretum Centre
108 Giles Avenue - Suite 100
Wilmington, N.C. 28403
(910) 791-8016 (OFFICE)
(910) 395-5734 (FAX)

**WILMINGTON
CHRISTIAN ACADEMY
1401 NORTH COLLEGE ROAD
WILMINGTON, NC**

INITIAL DATE: 2/01/01
COMPLETED: 4/5/02
DRAWN BY: -
CHECKED BY: -

This drawing is the property of Barker/Guidry Architects Inc. and is not to be reproduced or copied in whole or part. It is not to be used on any other project and is to be returned upon request.

© BARKER/GUIDRY
ARCHITECTS INC.

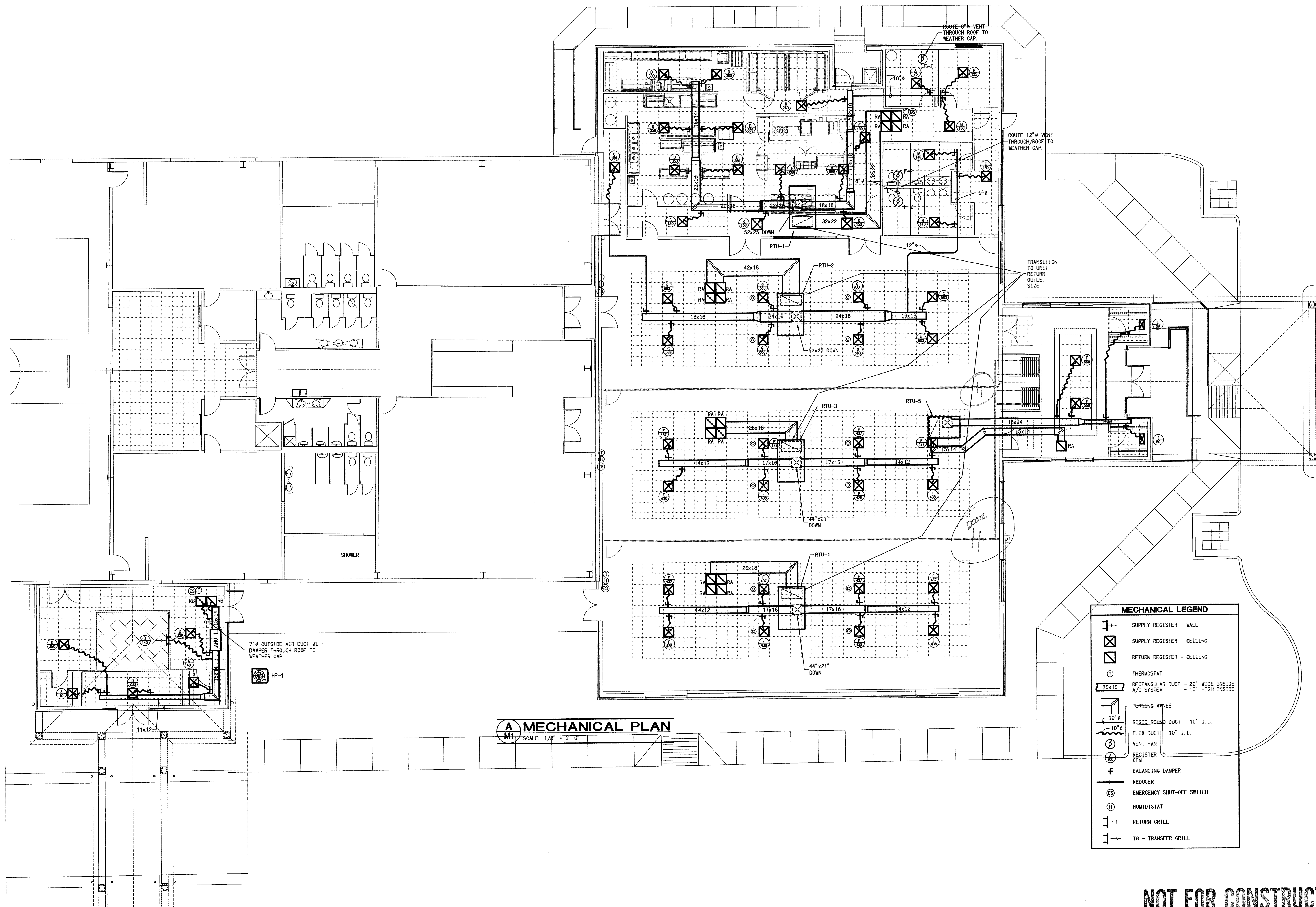
REVISIONS:

NO.	DATE	BY	REVISIONS	REF
1	1/09/02	GEN	REVISIONS	REF

DRAWING:
MECHANICAL
PLAN

SHEET:
M1

OF: TWO



NOT FOR CONSTRUCTION